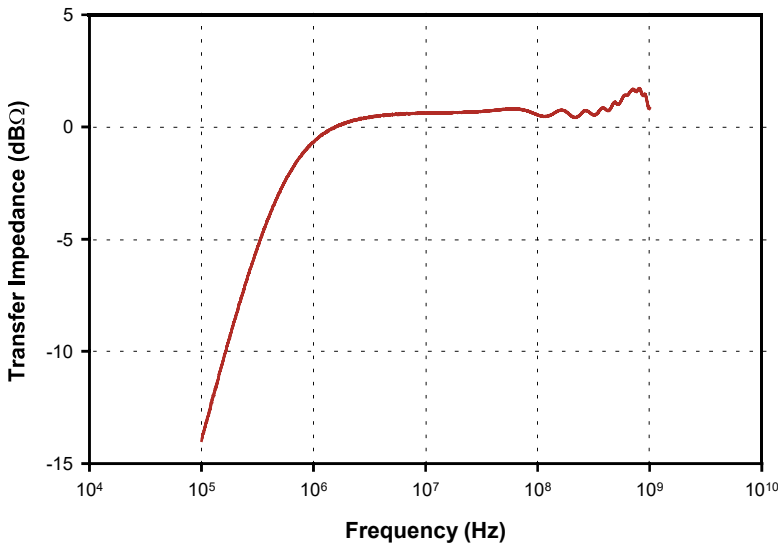
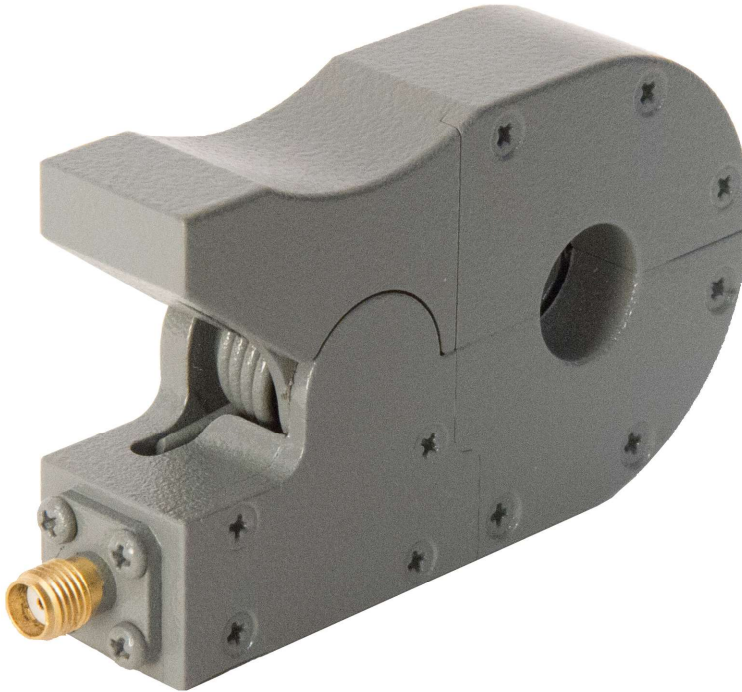


CURRENT PROBE

The F-37-2 is for laboratory and field testing. The useable frequency range of this probe is 10 kHz – 1 GHz. The F-37-2 has a typical transfer impedance of 1Ω (+ 2 dB) over the frequency range of 500 kHz – 1 GHz. The RF current range is 10 amperes CW and 100 amperes peak pulse with a duty cycle of 0.1. The maximum primary power line current is 60 amperes from DC to 400 Hz.



Specifications

Frequency:	10 kHz – 1 GHz
Internal diameter:	12 mm
External diameter:	44 mm
Length:	81 mm
Width:	18 mm
$Z_t\Omega^1$:	1
dB Ω^1 :	0
Connector:	Type-SMA
DC to 400 Hz:	60 amperes
RF(CW):	10 amperes
Peak Pulse Current ² :	100 amperes

1: Probe calibrated with 50 Ω + j0 Ω Load Impedance.
2: Depends upon the pulse width and pulse rep. rate.



Fischer Custom Communications, Inc.

20603 Earl St., Torrance, CA 90503
Phone: 310-303-3300
Fax: 310-371-6268
Email: sales@fischercc.com

© Fischer Custom Communications, Inc.